



Pedal Kit Installation



Wolf Performance Ltd
Walnut Forge, Wimpole Road
Barton
Cambridge
CB23 7AD

07944 720706

cain@wolfperformance.co.uk

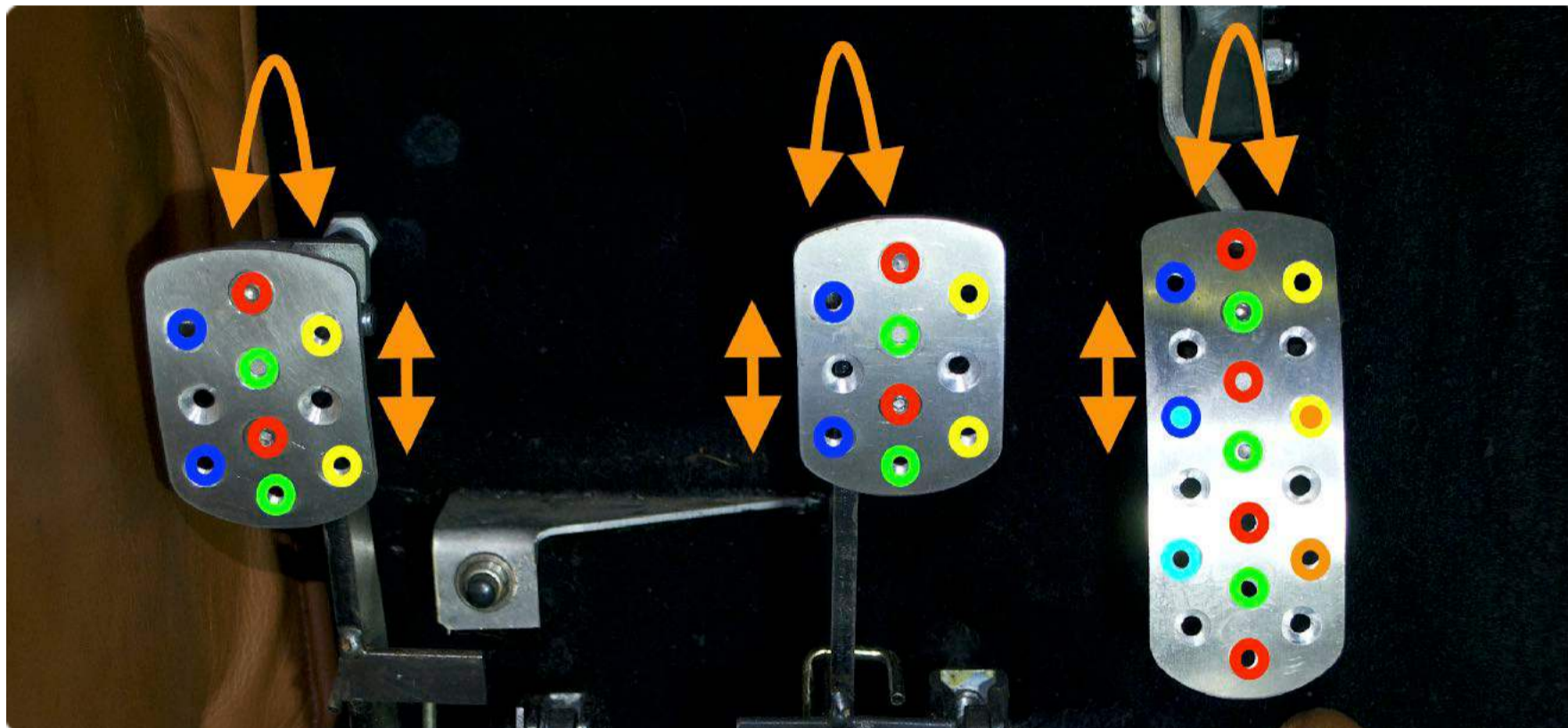
www.wolfperformance.co.uk

Adjustable pedal positions

Each pedal can be positioned to best suit you and your feet, this is achieved by the positioning holes on the pedal plates themselves (see colour coding).

You can also move the mounting blocks to the left or right hand sides of the lever-arms.

Each mounting block comes with two lever-arm mounting holes for up and down movement.



Step 1 - Clutch / Brake / Accelerator

Remove the pedals that you are changing

- A M6 or 5/16" UNF; nut and bolt holds the Roller Ball on to the accelerator lever-arm.
- A 1/2" or 13mm; spanner on the clutch and brake pedals.

The clutch and brake lever-arms are threaded and the 5/16" accelerator pedal lever-arm is threaded.

Note. Pictures show the M6 accelerator roller ball that requires a nut, as the lever-arm is not threaded.



Step 2 - Clutch

The “Clutch Pedal Stop” should be trimmed as shown (this means that it will not “stick out” to the side of the pedal)



Step 3 - Clutch

Assemble the pedal mount and clutch pedal stop as shown.

Remember that you have two mounting holes to choose from on the pedal mounting block.

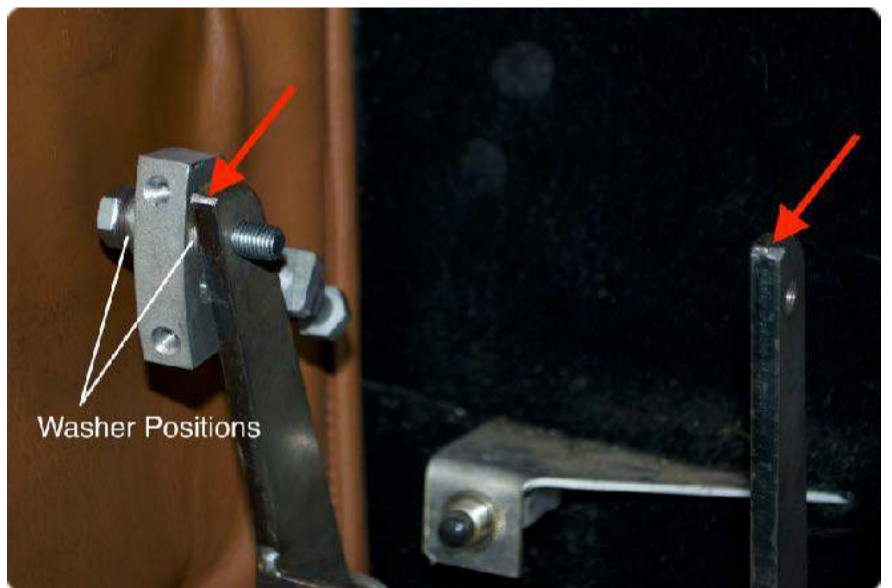
Fix to the lever-arm

Note. you only require 1 washer in each of the positions shown; as we changed the washer design

Step 4 - Clutch / Brake

Lightly **file** (see arrows) the tops(s) of the “upright” on lever-arms so that it is in-line with the new mounting blocks.

Mount the block, depending on your chosen position you can mount the block either side of the lever-arm, just need to “flip” the “Clutch Pedal Stop” L piece over and secure in the opposite direction.



Step 5 - Clutch

Using the countersunk screws, choose the pedal position and secure in place



Step 6 - Brake - Pedal Position Change

If you find that the brake pedal is too far forwards compared to the accelerator, you can adjust it by;

Loosen the lock nut on the rear of the clevis, allowing the bar to be turned. Or, you can also remove the split-pin and turn the clevis to the new position.

Remember a little change at the bottom make a big change at the top of the lever.

WARNING

When adjusting the throw of your brake pedal lever height, it is a fine line between having brakes and not having brakes.

Check before driving

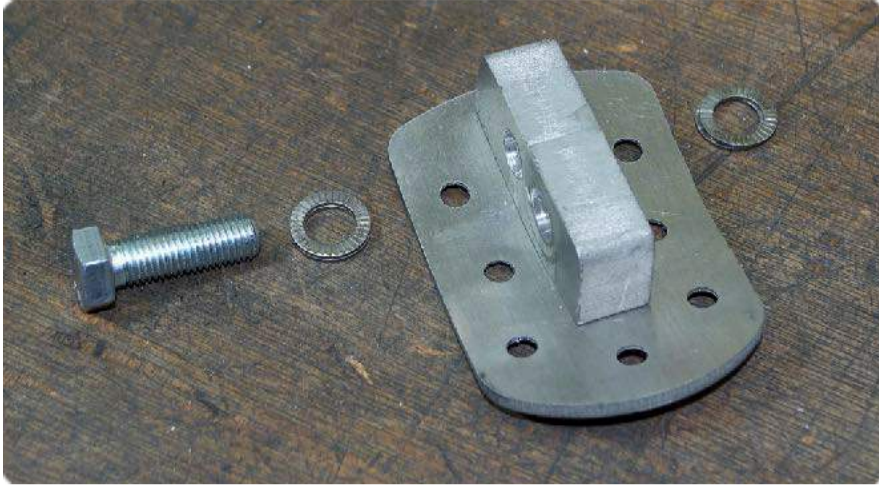
Step 7 - Brake - Pedal Position Change

You now need to move the “brake light” switches to its new lever-arm position.

The switches are mounted in “slots” that can be loosened and moved back or forwards.

Check the brake lights are operating correctly.



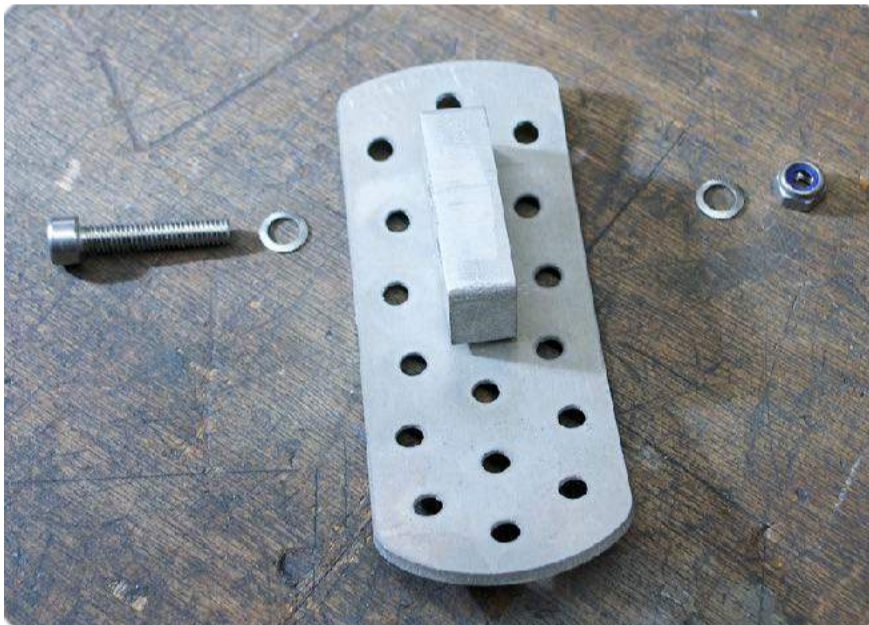
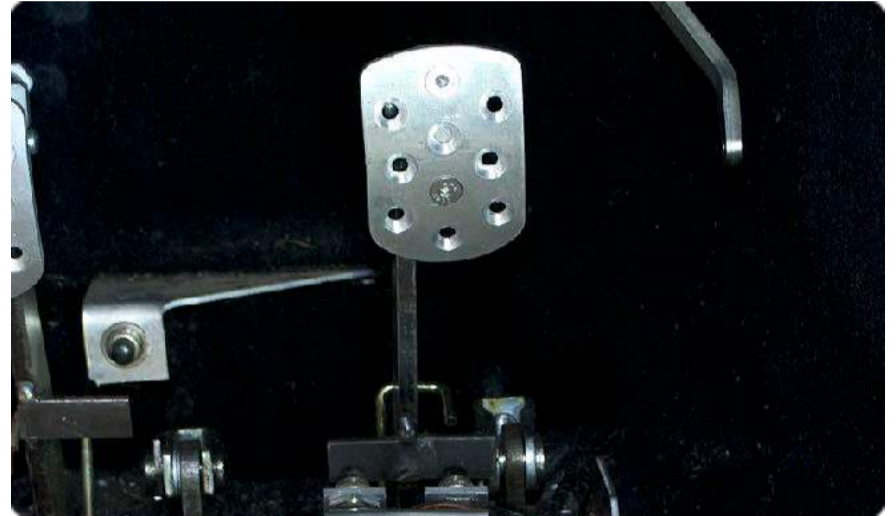


Step 8 - Brake

Install the mounting block in your desired position

Step 9 - Brake

Using the countersunk screws, choose the pedal position and secure in place



Step 10 - Accelerator

Install the mounting block, as desired, then using the countersunk screws, choose the pedals position and secure in place.

Note. If there is not a nut/bolt on your roller ball, it is most likely to be a 5/16" Bolt and the lever-arm is threaded.

