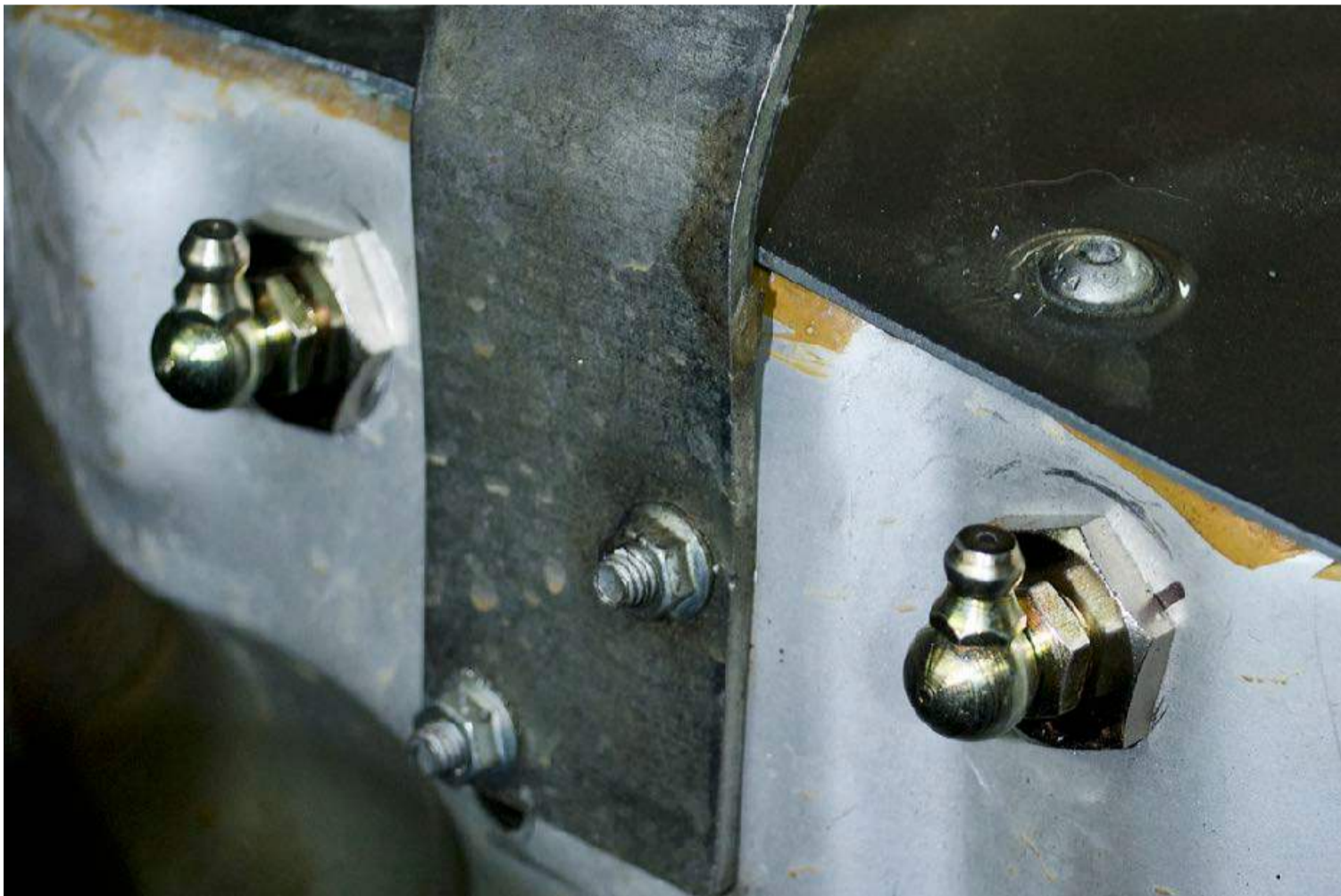




Remote Kingpin Greasing Kit Installation



Wolf Performance Ltd
Walnut Forge, Wimpole Road
Barton
Cambridge
CB23 7AD

07944 720706

cain@wolfperformance.co.uk

www.wolfperformance.co.uk

Step 1

Choose the location of where you want the grease points. We typically put them on the inner wing (engine bay side) next to your kingpins.

Step 2

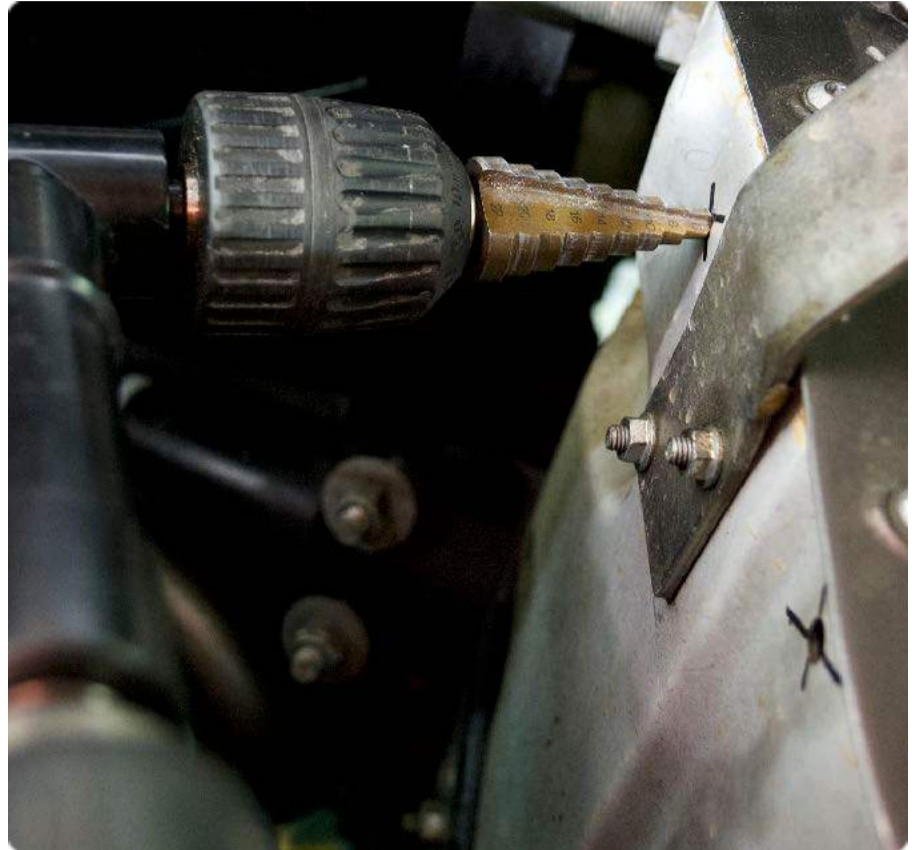
You need to have a 16.2 mm approx. hole for each bulkhead fitting, there needs a small clearance to allow the fitting to go through.

It is easier

Remember to de-bur the holes after drilling.

If you are fitting **both** top and bottom kits you will require 2 holes on either inner wing.

For **one** kit you will require 1 hole on either inner



Step 3

You need to screw the tube Push-In fitting into the bulkhead fitting.

Also screw the 90 degree nipples into the bulkhead fitting

You can use a turn of PTFE tape to ensure a seal.

Step 4

Pass the Bulkhead fitting through the wing hole from the engine bay side.





Step 5

Install the “big” nut on the Bulkhead fitting and tighten.

Ensure the grease nipples face up.



Step 6 - Top Point (Red Cap)

Replace the top kingpin grease nipple with the “narrow” 90 degree elbow joint

You can use a turn of PTFE tape to ensure a seal.





Step 7 - Bottom Point (Blue Cap)

Replace the bottom kingpin grease nipple with the “wide” 90 degree elbow joint

You can use a turn of PTFE tape to ensure a seal.



Step 8 - Tubing

Now join the elbow’s to the bulkhead fitting with the tubing, remembering to route the tube so that it does not restrict the suspension and steering.

Just push the tube into the “gold” collars so that the collar fits flush on the the joint



Step 9 - Grease

You can now pump grease though the kit to the kingpins. This will take time as it is a dry system.

Ensure that grease is coming out at the kingpin.